


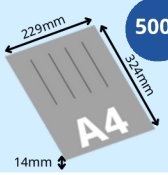
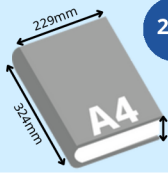


# Delivery Rates & Mailing Guidelines

Your comprehensive guide to domestic and international delivery rates, mailing requirements and packaging guidelines.

V202601

# Domestic Delivery Rates

	Untracked		Tracked
	Standard Regular (Mail <sup>1</sup> )	Standard Large (Mail <sup>1</sup> )	Tracked Letterbox <sup>2</sup> (Mail/Packages)
	Registered Service (Singapore): An optional value-added trackable, sign-for doorstep service Fee: \$6.16 + prevailing postage rate		
Maximum Dimensions and Weight			
Postage Rate	\$0.62	\$0.90	\$2.00

Postage-Paid Products	Tracked			
	smartpac Small	smartpac Medium	smartpac Box	Prepaid Labels
Maximum Dimensions and Weight	220 x 150mm No weight limit	330 x 240mm No weight limit	300 x 190 x 65mm No weight limit	324 x 229 x 65mm Up to 2kg
Price Per Pack	\$22.00 (10 pieces)	\$24.00 (10 pieces)	\$32.00 (10 pieces)	\$40.00 (20 pieces)

To explore offers and purchase smartpacs and prepaid labels, please visit <https://shop.singpost.com/materials-packaging/postage-paid-packaging.html>.



# Speedpost (Singapore) Service Rates

Parcel		
Weight Up To	Dimensions Up To	Speedpost Standard <sup>3</sup>
30kg	600 x 400 x 300mm	\$6.20

- For letters, postcards or mail items in card form, printed paper or paper-based items in a paper-based envelope.
- Mail and packages sent via Tracked Letterbox must not exceed the maximum dimensions of 324 x 229 x 65mm and weight of 2kg.
- For posting of bulky parcels larger than 600 x 400 x 300mm but L+2W+2H within 3m (max length 1.5m) and weight within 30kg, Speedpost delivery rate of \$12.30 will apply.

All rates are in Singapore Dollars, inclusive of prevailing GST. Please refer to Mail Sizes and Conditions Guide for more information. Rate Calculator is available on [www.singpost.com](http://www.singpost.com) and the SingPost mobile app. SingPost shall not be liable for all untracked services and Registered Service (Singapore).

# International Postage Rates - Airmail<sup>1</sup>

Basic Mail (Letters/Printed Papers <sup>2</sup> /Postcards <sup>4</sup> /Aerogrammes)			
Destination	Weight Up To (Max Weight: 2kg)	Letters/Printed Papers <sup>2</sup>	Postcards <sup>4</sup> (Per Piece)
		Registered Service (International) <sup>3</sup> : An optional value-added service Fee: \$3.60 + prevailing postage rate	
<b>Zone 1</b> Malaysia & Brunei	20g	\$0.85	\$0.75
	50g	\$1.05	
	100g	\$1.45	
	Per additional 100g	\$1.10	
<b>Zone 2</b> Countries in Asia & The Pacific (except Australia, Japan & New Zealand)	20g	\$0.95	\$0.85
	Per additional 10g	\$0.25	
<b>Zone 3</b> Australia, Japan, New Zealand & Rest of the world	20g	\$1.55	\$0.85
	Per additional 10g	\$0.35	
<b>Aerogrammes</b> (to all countries except Malaysia & Brunei)		\$0.85	

Basic Package <sup>3</sup> (Small Packets)		
Destination	Weight Up To (Max Weight: 2kg)	Basic Package (International)
<b>Zone 1</b> Malaysia & Brunei	250g	\$3.50
	500g	\$5.70
	1kg	\$10.10
	2kg	\$20.00
<b>Zone 2</b> Countries in Asia & The Pacific (except Australia, Japan & New Zealand)	250g	\$5.70
	500g	\$12.50
	1kg	\$22.50
	2kg	\$45.00
<b>Zone 3</b> Australia, Japan, New Zealand & Rest of the world	250g	\$8.30
	500g	\$17.50
	1kg	\$31.50
	2kg	\$63.00

1 GST is not applicable to international mail rates. To calculate delivery rates, please use the Rate Calculator on [www.singpost.com](http://www.singpost.com) or the SingPost mobile app.

2 Printed Papers include but are not limited to paper-based items like annual reports, books, catalogues, direct mail, newspapers or periodicals with no commercial value.

3 "Package" refers to small packets containing goods or merchandise that are up to 2kg in weight. The largest dimension should not exceed 600mm, with length, width and height combined not exceeding 900mm. In roll form: length plus twice the diameter: 1,040mm, but the greatest dimension may not exceed 900 mm.

4 Letter/Printed Paper rates will apply if the postcard exceeds the maximum dimensions of 235 x 120mm (for overseas posting only).

5 Effective 1 January 2026, the International Registered Service will be restricted to letter-post items containing documents only (printed papers with no commercial value). Please note that the end-to-end tracking capabilities for this service are dependent upon the destination country's postal service and are only available for selected countries.

All rates are in Singapore Dollars. SingPost shall not be liable for all untracked services and Registered Service (International).

# International Postage Rates - Surface Mail<sup>1</sup>

Destination	Weight Up To (Max Weight: 2kg)	Letters/ Printed Papers	Postcards (Per Piece)
To all countries (except Malaysia & Brunei)	20g	\$0.50	\$0.30
	50g	\$0.70	
	100g	\$1.00	
	Per additional 100g	\$1.00	

<sup>1</sup> GST is not applicable to international mail rates. To calculate delivery rates, please use the Rate Calculator on [www.singpost.com](http://www.singpost.com) or the SingPost mobile app.

# Speedpost (International) Service Rates

Destination	Weight Up To (Max Weight: 2kg)	Speedpost Saver International <sup>2</sup>
<b>Zone 1</b> Malaysia & Brunei	250g	\$7.10
	500g	\$9.30
	1kg	\$13.70
	2kg	\$23.60
<b>Zone 2</b> Countries in Asia & The Pacific (except Australia, Japan & New Zealand)	250g	\$9.30
	500g	\$16.10
	1kg	\$26.10
	2kg	\$48.60
<b>Zone 3</b> Australia, Japan, New Zealand & Rest of the world	250g	\$11.90
	500g	\$21.10
	1kg	\$35.10
	2kg	\$66.60

<sup>2</sup> For Speedpost Saver International, the package's maximum length must not exceed 600mm, and the combined length, width, and height must not exceed 900mm. Please note that Enhanced Liability (for extra coverage) is not applicable to this service.

All rates are in Singapore Dollars. SingPost shall not be liable for all untracked services.

# Speedpost (International) Service Rates

Destination	Weight Up To	Package <sup>1</sup>		
		Speedpost Express International	Speedpost Priority International	Speedpost Economy International <sup>3</sup>
Zone A Malaysia	Document <sup>2</sup>	\$25.00	\$20.00	-
	2kg	\$61.00	\$39.00	\$26.00
	5kg	\$91.00	\$55.00	\$26.00
	10kg	\$122.00	\$78.00	\$43.00
	20kg	\$158.00	\$115.00	\$66.00
Zone B Asia	Document <sup>2</sup>	\$50.00	\$45.00	-
	2kg	\$108.00	\$78.00	\$37.00
	5kg	\$180.00	\$123.00	\$37.00
	10kg	\$269.00	\$182.00	\$64.00
	20kg	\$398.00	\$278.00	\$106.00
Zone C Australia, New Zealand, Europe, USA & Canada	Document <sup>2</sup>	\$75.00	\$70.00	-
	2kg	\$159.00	\$107.00	\$80.00
	5kg	\$259.00	\$161.00	\$80.00
	10kg	\$400.00	\$232.00	\$135.00
	20kg	\$569.00	\$354.00	\$202.00
Zone D Rest of the World	Document <sup>2</sup>	\$100.00	\$95.00	-
	2kg	\$393.00	\$155.00	\$86.00
	5kg	\$630.00	\$260.00	\$86.00
	10kg	\$929.00	\$386.00	\$160.00
	20kg	\$1,388.00	\$603.00	\$282.00

- All packages are subject to a maximum size of 2m. The maximum length is 1.05m, and the combined length plus girth (circumference: 2xWidth + 2xHeight) must not exceed 2m.
- This rate is for Documents in flat envelope up to 1kg only. For documents exceeding 1kg, Speedpost (International) parcel rates apply. Compensation is not applicable to items sent using Speedpost Document rates.
- Maximum posting weight of either 10kg or 20kg applies, depending on destination. Please refer to [www.speedpost.com.sg](http://www.speedpost.com.sg) for details.

All rates are in Singapore Dollars. Speedpost (International) Service Rates are exclusive of duties and other relevant taxes. Optional enhanced liability for extra coverage is available, please refer to [www.speedpost.com.sg/EnhancedLiability](http://www.speedpost.com.sg/EnhancedLiability) for more details. The latest terms and conditions are available at [www.speedpost.com.sg](http://www.speedpost.com.sg).

# Mailing Guidelines

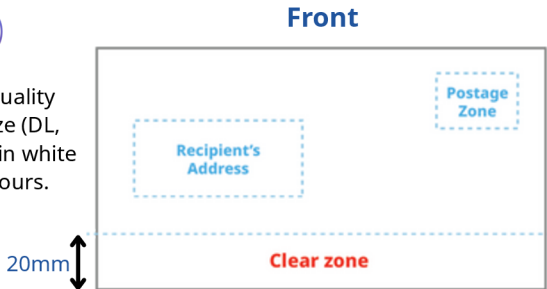
## 1. Accurate Addressing Guidelines

2

Ensure mailing address is accurate and complete in large font size (preferably font size 12).

1

Use good quality envelope size (DL, C4, C5 or C6) in white or light colours.

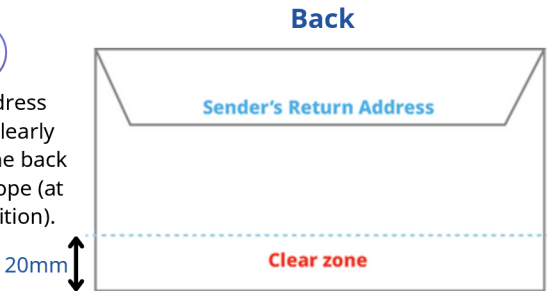


3

Affix sufficient postage; if using multiple stamps, place them side by side horizontally.

4

Return address should be clearly written on the back of the envelope (at the top position).



5

Seal your letter with glue. **Do not** staple.

6

Avoid printing in colour or writing within the 'Clear Zone' of the envelope.

# Mailing Guidelines

## 2. Size Guide

	Mail (Standard Regular)	Mail (Standard Large)
	240 x 162 x 6mm	324 x 229 x 14mm
Maximum Dimensions and Weight		
	Package	Parcel
	324 x 229 x 65mm	600 x 400 x 300mm
Maximum Dimensions and Weight		
Ideal to fit items like:	<p>Apparel, books, fashion accessories, small tech gadgets &amp; accessories, makeup &amp; skin/body care products and many more!</p>	<p>Apparel, shoes, bag, tech gadgets, small electronics and many more!</p>



Before posting, ensure your items comply with safety regulations. Review the full list of prohibited and dangerous goods on the **SingPost Dangerous Goods Guide**.

# Mailing Guidelines

## 3. How to Pack and Seal Packages

- Use good quality packaging with cushioning materials such as honeycomb wrap, foam peanuts or kraft paper to protect the contents.
- Pack the items tightly to prevent shifting.
- Always use tape designed for shipping. **Do not use wrapping paper and string.**
- Use clear tape to secure carton boxes of all sizes. Seal your box with H-shape taping for maximum strength.

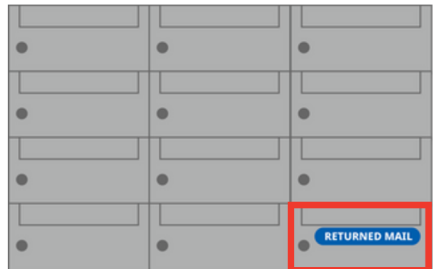


Protect important documents such as certificates and photographs with our rigid envelope made of cardboard or roll it up in a mailing tube if it is larger than A4.

Need more packing solutions and size guide? A wide range of materials is available at <https://shop.singpost.com/materials-packaging.html>

## 4. Returning Mail

If you received mail not meant for you, please drop it into the Returned Mail Letterbox or any posting box. If you know that the recipient has moved out, please strike off the front of the envelope and state the reason e.g. Recipient moved out.



# CONNECTING SINGAPORE

Delivering Nationwide Through Our  
Extensive Network of Service Touchpoints

## POPStop Service Points



in heartlands  
and transit hubs

Manned counters/heartland stores for  
eCommerce parcel transactions,  
including lodgement and returns

## POPDrop Self-Service Boxes



for convenient  
sending/returns options

Self-service drop-off boxes with  
built-in tracking for smaller parcels,  
supporting letterbox delivery

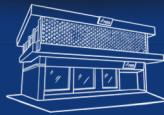
## Parcel Lockers



Pick, Parcel Santa,  
POPStation across  
Singapore

24/7 self-service parcel lockers

## Post Offices



strategically located  
islandwide

Counter services for sale of stamps,  
parcel drop-offs, registered mail, and  
other postal needs

## Posting Boxes



found in neighbourhoods  
across the island

Public posting box for the secure  
drop-off of outgoing mail





Scan QR Code for  
Rate Calculator

## Delivering to a Singapore address?

YES

NO

Please refer to [www.singpost.com](http://www.singpost.com) for detailed service descriptions, delivery standards and full terms and conditions of the respective services.

### DOMESTIC DELIVERY

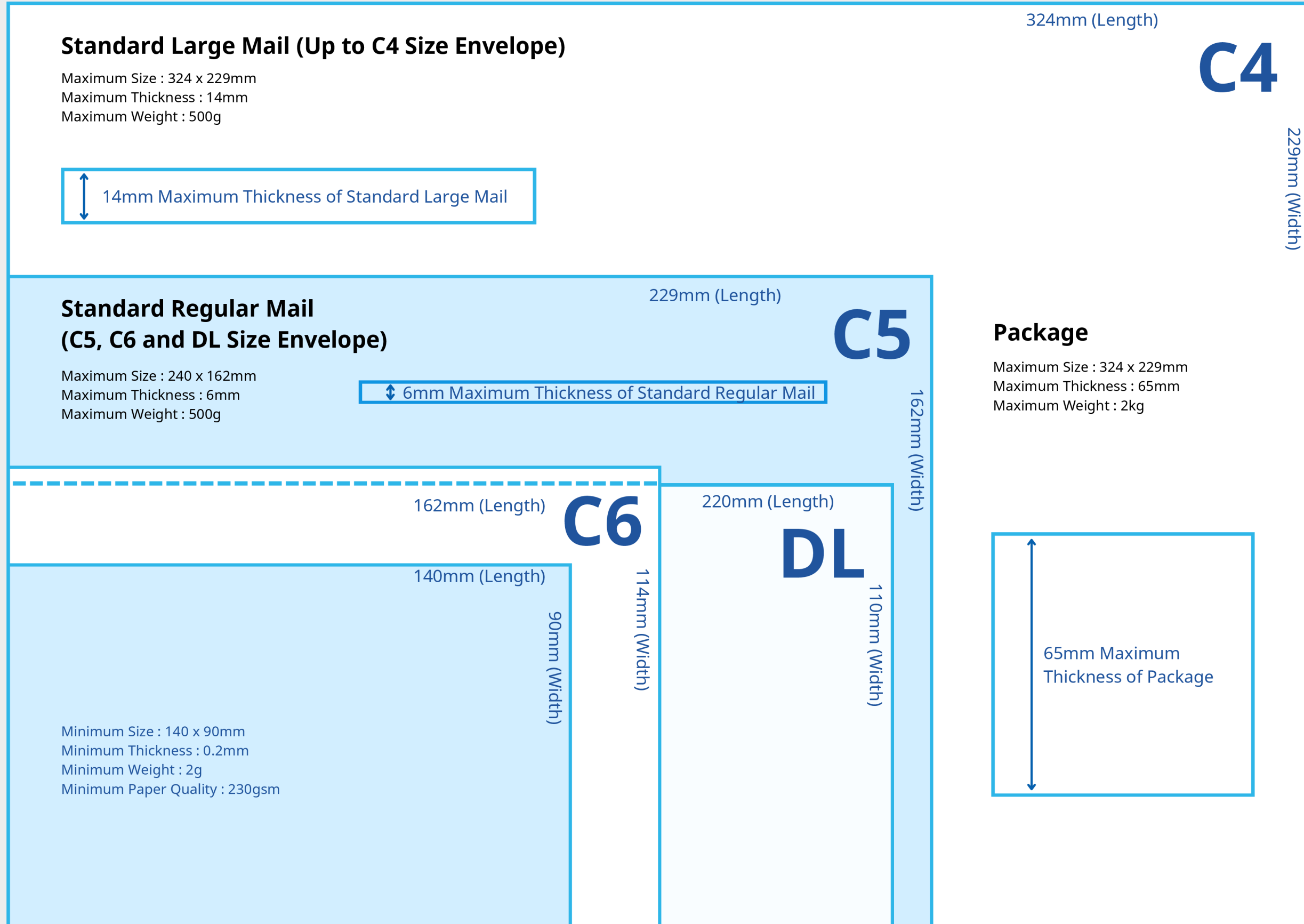
### INTERNATIONAL DELIVERY

	Mail		Mail/Package		Package		Mail		Package				
Delivery Service	Standard Regular Mail	Standard Large Mail	Tracked Letterbox	Prepaid Label	smartpac (Small, Medium, Box)	Speedpost Standard	Surface Mail	Airmail - Basic Mail	Airmail - Basic Package	Speedpost Saver International	Speedpost Economy International	Speedpost Priority International	Speedpost Express International
Tracking	✗	✗	✓	✓	✓	✓	✗	✗	✗	✓	✓	✓	✓
Delivery Timeline	1 - 2 Working Days		2 Working Days			1 Working Day	3 - 15 Weeks	3 - 12 Working Days		3 - 11 Working Days	3 - 15 Weeks	3 - 14 Working Days	2 - 9 Working Days
Maximum Dimension	240 x 162 x 6mm	324 x 229 x 14mm	324 x 229 x 65mm		300 x 190 x 65mm	600 x 400 x 300mm	305 x 381 x 20mm	Max. length 600mm L+W+H within 900mm			Max. length 1.05m Max. length plus girth (2W+2H) must not exceed 2m		
Weight Limit	500g		2kg		No weight limit	30kg	2kg					20kg	
Compensation	Not applicable		Up to \$10		Up to 3 smartpacs	Up to \$150	Not applicable			Up to \$68	Up to \$150		
Optional Service	<b>Registered Service (Singapore):</b> An optional value-added trackable, sign-for doorstep service  Fee: \$6.16 + prevailing postage rate		Not applicable	Not applicable	Not applicable	<b>Enhanced Liability add on:</b> Top up your insurance up to a Maximum Declared Value Per Shipment of \$2000.  Fee : 2% of declared value	Not applicable	<b>Registered Service (International):</b> An optional value-added service  Fee: \$3.60 + prevailing postage rate	Not applicable	Not applicable	<b>Enhanced Liability add on:</b> Top up your insurance up to a Maximum Declared Value Per Shipment of \$2000.  Fee : 2% of declared value		

# Mail Sizes and Conditions Guide

## Actual Size

Applicable for domestic mail only.



## Standard Mail Conditions

1. Mail items in standard envelope sizes: C4, C5, C6 and DL or specified Standard Mail sizes.
2. Letters, postcards or mail items in card form, printed papers or paper-based items in a paper-based envelope.
3. Paper based mail items that include but are not limited to annual reports, direct mail, books, catalogues, newspapers and periodicals.
4. Mail items must not exceed the maximum dimension of 324 x 229 x 14mm (length x width x height) and weighing not more than 500g.

## Package Conditions

1. All mail items not meeting the Standard Mail Conditions.
2. Mail items containing letters/printed papers with a card/ token.
3. Packages must not exceed the maximum dimension of 324 x 229 x 65mm (length x width x height) and weighing not more than 2kg.



[www.singpost.com](http://www.singpost.com)



1605



**SingPost  
Mobile App**

**Singapore Post Limited**

(Reg. No. 199201623M)

10 Eunos Road 8, Singapore Post Centre,  
Singapore 408600

All information is accurate at the time of print. For more information on our products and services, please visit [www.singpost.com](http://www.singpost.com).